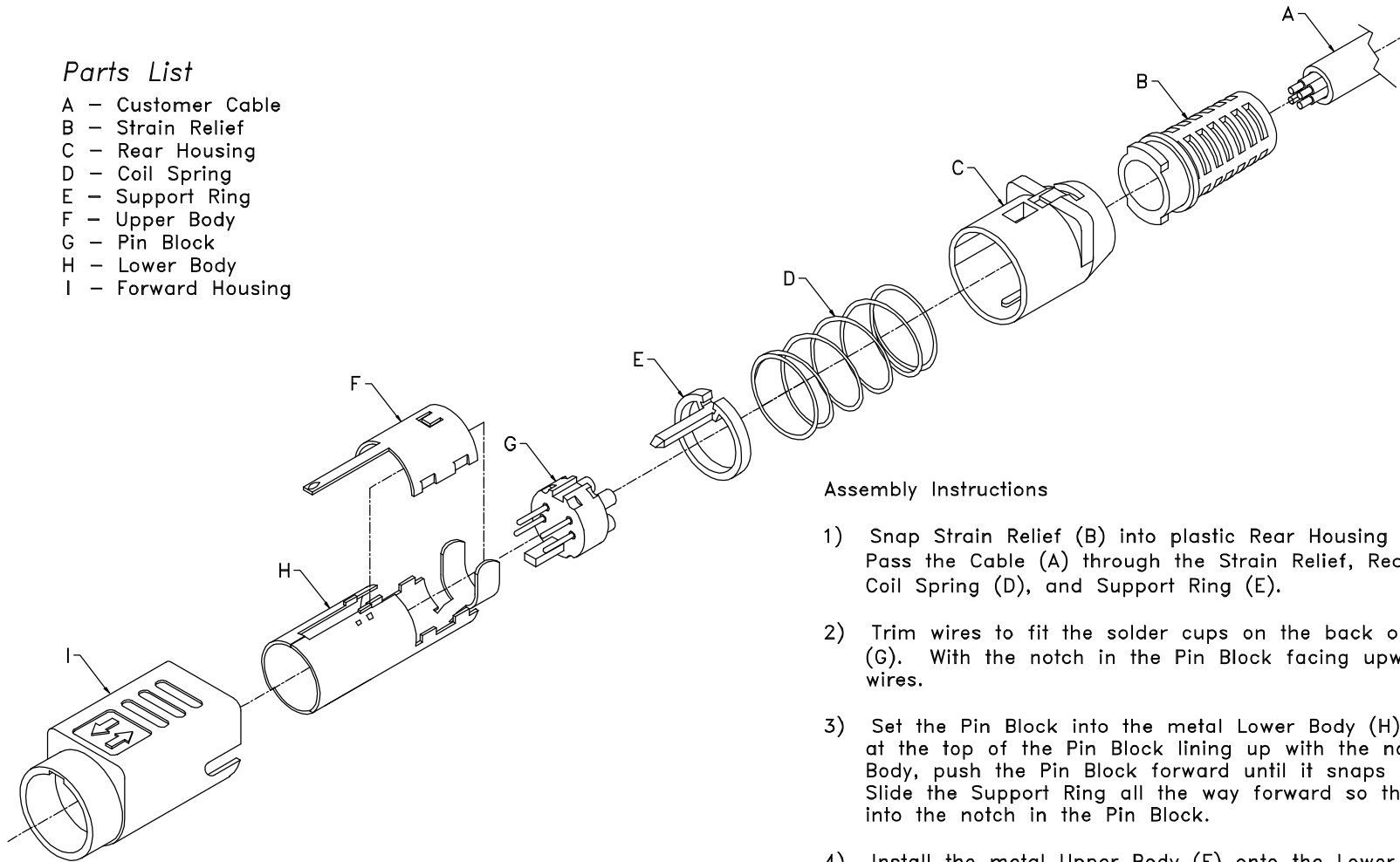


**Parts List**

- A - Customer Cable
- B - Strain Relief
- C - Rear Housing
- D - Coil Spring
- E - Support Ring
- F - Upper Body
- G - Pin Block
- H - Lower Body
- I - Forward Housing



**Assembly Instructions**

- 1) Snap Strain Relief (B) into plastic Rear Housing (C). Pass the Cable (A) through the Strain Relief, Rear Housing, Coil Spring (D), and Support Ring (E).
- 2) Trim wires to fit the solder cups on the back of the Pin Block (G). With the notch in the Pin Block facing upwards, solder the wires.
- 3) Set the Pin Block into the metal Lower Body (H). With the slot at the top of the Pin Block lining up with the notch in the Lower Body, push the Pin Block forward until it snaps into place. Slide the Support Ring all the way forward so that the tab slides into the notch in the Pin Block.
- 4) Install the metal Upper Body (F) onto the Lower Body.
- 5) Crimp the metal tabs at the back of the Lower Body around the Cable.
- 6) Slide the Coil Spring forward over the Upper/Lower Body assembly.
- 7) Align the notch in the Rear Housing with the top of the Upper/Lower Body assembly and snap together.
- 8) Align the Forward Housing (I) with the assembly and slide together until the parts lock.

CSA NRTL/C Certified File No. LR78160

REVISION	DATE	DESCRIPTION	DRAWN BY	DESIGNED BY	UNITS	KMDLA Series Assembly	KMDLA Series Assembly	
B	6/23/97	New Drawing	C. Leiva					
C	6/24/97	Add Instruc.	CHECKED BY	APPROVED BY	DATE			
					6/23/97	Parts List, Instructions		